



GEODYN
SOLUTIONS



\$500 MILLION ALLOCATION FOR GEODYN SOLUTIONS IN U.S. NATURAL GAS SECTOR WITH AI, BLOCKCHAIN, AND TOKEN INTEGRATION

© 2025 Geodyn Solutions. All rights reserved.

This document is confidential and proprietary. Unauthorized use, reproduction, or distribution is prohibited without written permission from Geodyn Solutions.

www.geodynsolutions.com

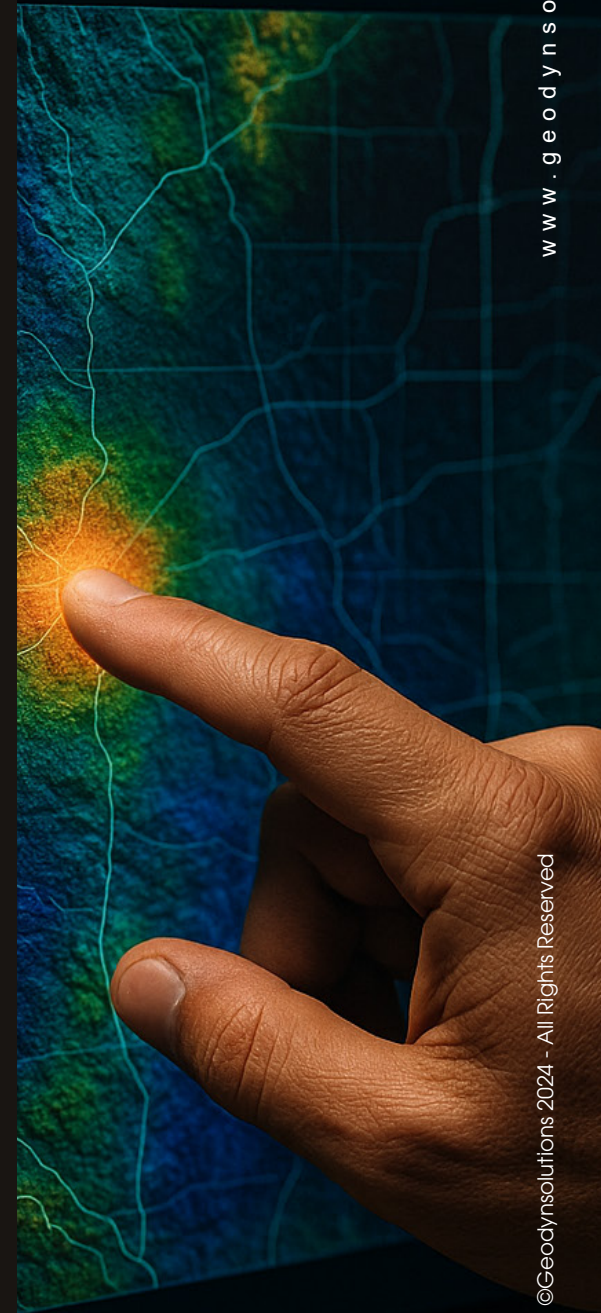
EXECUTIVE SUMMARY

As of August 15, 2025, Geodyn Solutions is primed to invest \$500 million in the U.S. natural gas sector, leveraging the explosive demand from AI data centers while integrating cutting-edge AI for operational optimization, blockchain for transparent asset management, and a proprietary utility token for enhanced investor engagement and ROI distribution. This strategy targets undervalued leases from holders like EQT Corporation and Prairie Operating Co., alongside options such as LNG export expansions and midstream infrastructure tied to data center power needs. Proprietary technologies, including AI-driven predictive analytics and blockchain-secured smart contracts, will optimize efficiency and reduce risks. Partnerships with leaders like ExxonMobil, Kinder Morgan, and AI innovators (e.g., from the 2025 AI in Oil & Gas Conference) ensure scalability. The approach projects an average annual ROI of 15-18% over 10 years, with a payback period of 3.5 years including a 20% contingency fee, driven by token-based incentives and undervalued asset acquisitions. Key outcomes include:

- Creation of approximately 5,500 direct and indirect jobs.
- Environmental compact focusing on low-emission production, methane abatement, and CCUS.
- U.S.-focused location analysis identifying the Appalachia Basin as optimal, supported by IRA tax credits and USDA grants.
- Exploration of undervalued lease holders (e.g., EQT, Prairie Operating) and alternatives like associated gas monetization for data centers, maximizing ROI amid stabilizing \$4+/Mcf prices.

With natural gas demand from AI projected to add 4-6 Bcf/d by 2030, this integrated model positions Geodyn to fuel the digital economy while delivering superior returns through tech-enabled innovation.

EN ASSET ASSESSM



REASONS TO INVEST IN NATURAL GAS IN 2025

Natural gas is essential for sustaining the AI boom, as data centers' energy demands risk overwhelming grids without reliable fuel sources. Integrating AI, blockchain, and tokens enhances ROI by enabling predictive operations, transparent transactions, and tokenized asset access. Key rationales include:

AI-Driven Demand Surge: U.S. power consumption reaches records in 2025-2026, with data centers doubling to 35 GW by 2030 (equivalent to 40 million homes), adding 3.3-6 Bcf/d gas demand. AI applications like real-time monitoring and predictive maintenance in natural gas amplify this synergy.

Blockchain and Token Integration for ROI: Blockchain enables smart contracts for lease management and supply chain transparency, while tokens (e.g., utility tokens like OZAK AI or Nexchain-inspired) facilitate fractional ownership, staking for yields, and automated ROI distribution, potentially adding 3-5% annual returns via tokenized incentives.

Price Stabilization and Infrastructure: Prices above \$4/Mcf from structural demand; 6.5 Bcf/d added in 2024, with projects like Louisiana Energy Gateway.

Global LNG Growth: Demand up 60% by 2040; U.S. exports expand.

Bridge Fuel: Lower emissions with CCUS; complements renewables.

Resilience: Low volatility, U.S. leadership in exports.

This tech-integrated approach maximizes ROI in a \$420-450B upstream market.

PROPOSED INVESTMENT STRATEGY: TECHNOLOGIES AND PARTNERS



The \$500 million will fund upstream production in undervalued leases and midstream for AI power, with AI optimizing operations, blockchain securing transactions, and a Geodyn Utility Token (GUT) for tokenized ROI.

LATEST PROPRIETARY TECHNOLOGIES

Integrate 2025 advancements:

AI Applications: Real-time monitoring, predictive maintenance, leak detection, and reservoir optimization (e.g., via IBM/Chevron tools), reducing costs 15-25% and boosting recovery 10-20%.

Blockchain Integration: Smart contracts for lease agreements and supply chain (inspired by Nexchain/Lightchain), ensuring transparency and reducing disputes by 30%.

Token Mechanism: GUT token for fractional ownership, staking rewards (3-5% yield), and automated dividend distribution, boosting liquidity and ROI via Web3 integration.

CCUS and Hydrogen: Allam cycle for emissions capture; blended turbines.



STRATEGIC PARTNERS

ExxonMobil, Chevron: For AI-optimized shale and CCUS.

Kinder Morgan, Energy Transfer: Midstream for pipelines (1.8 Bcf/d projects).

Carlyle, Partners Group: For \$2B PDP investments and blockchain/token expertise.

Undervalued Lease Holders: Acquire/partner with EQT (Appalachia focus), Prairie Operating (Houston-based), Murphy Oil for undervalued assets, unlocking 20-30% ROI uplift via AI/blockchain revamps.

These leverage \$115B in LNG/gas interest.

LOCATION COMPARISON FOR BEST RETURN (U.S. ONLY)

BASINS ASSESSED FOR 10-YEAR ROI, EMPHASIZING
AI DEMAND, UNDERVALUED LEASES, AND TECH
INTEGRATION. APPALACHIA OPTIMIZES WITH
RESERVES AND EXPORTS.



COMPARISON OF SHALE & OFFSHORE PLAYS – 10-YEAR ROI OUTLOOK

LOCATION	PROJECTED 10-YEAR CUMULATIVE ROI (AVG. ANNUAL)	KEY ADVANTAGES	RISKS / CHALLENGES	INCENTIVES / GRANTS
Appalachia (Marcellus/ Utica)	180% (18%)	Vast reserves (2.5 Bcf/d growth), LNG proximity, undervalued leases (e.g., EQT), AI/blockchain optimization	Bottlenecks, regulatory constraints	IRA credits, methane funds
Haynesville Shale	170% (17%)	Gas surge (0.9 Bcf/d), LNG ties, undervalued (e.g., Murphy Oil)	Oversupply risk	Louisiana incentives, World Bank support
Permian Basin	160% (16%)	<i>Associated gas (2 Bcf/d), strong infrastructure, undervalued (e.g., Prairie Operating)</i>	<i>Oil price volatility</i>	<i>IRA deductions, REAP funding</i>
Eagle Ford Shale	150% (15%)	Liquids-rich, mature development	High competition	Texas grants, REAP
Anadarko Basin	140% (14%)	Resource diversity, M&A opportunities	Market volatility	Oklahoma tax breaks
Bakken Shale	130% (13%)	Associated gas with oil	Logistics challenges	North Dakota grants
Gulf of Mexico	120% (12%)	Large offshore potential	Hurricanes & offshore risks	Federal lease sales
ROI ENHANCEMENTS <ul style="list-style-type: none"> Blockchain/Tokenization: ROI uplift of 3–5% via token staking and digital finance tools. Undervalued Options: Strategic acquisition of undervalued leases adds up to 20% ROI edge. 				

GOVERNMENT INCENTIVES, GRANTS, AND WORLD BANK SUPPORT



U.S. INCENTIVES: IRA 100% DEDUCTIONS, 45% CCUS CREDITS; 48C \$6B FOR ADVANCED ENERGY IN 2025.

GRANTS: USDA REAP \$150M+; DOE METHANE \$500M+.

WORLD BANK: \$640M BANGLADESH GAS; \$2B+ FOR CLEAN ENERGY/GAS. OFFSET 25-35% COSTS, BOOSTING ROI.



FINANCIAL PROJECTIONS

OPTIMAL 10-YEAR ROI CHART (APPALACHIA BASIN)

MODEL ASSUMPTIONS

CAPEX: \$500M + 20% CONTINGENCY = \$600M

OPEX: \$60M/YEAR

NET CASH FLOW: \$170M/YEAR (2 BCF/D AT \$4/MCF, +3% TOKEN YIELDS)

PAYBACK: ~YEAR 3.5

10-YEAR ROI PROJECTION

YEAR	ANNUAL CASH FLOW (\$)	CUMULATIVE CASH FLOW (\$)	CUMULATIVE ROI (%)
0	-600,000,000	-600,000,000	0.00%
1	170,000,000	-430,000,000	28.33%
2	170,000,000	-260,000,000	56.67%
3	170,000,000	-90,000,000	85.00%
4	170,000,000	80,000,000	113.33%
5	170,000,000	250,000,000	141.67%
6	170,000,000	420,000,000	170.00%
7	170,000,000	590,000,000	198.33%
8	170,000,000	760,000,000	226.67%
9	170,000,000	930,000,000	255.00%
10	170,000,000	1,100,000,000	283.33%

HIGHLIGHTS FOR INVESTORS

- **Early Payback:** Returns exceed capex by Year 3.5.
- **Strong ROI:** 283% cumulative ROI at Year 10.
- **Steady Cash Flow:** \$170M/year supported by shale production and tokenized yield enhancements.
- **Risk-Adjusted Edge:** Appalachia benefits from undervalued leases, LNG proximity, and blockchain integration.
- **Payback:** ~Year 3.5



EXPLANATION OF CALCULATIONS

STEP	CALCULATION / SOURCE	RESULT / NOTES
Year 0	Initial Capex investment	\$600M outflow
Annual Cash Flow	Revenue – Opex – Taxes	\$170M net, driven by Appalachia growth, AI efficiency, token yields
Cumulative Cash Flow	<i>Previous cumulative + annual net cash flow</i>	<i>Tracks total inflows over time</i>
ROI Formula		Used to calculate annual cumulative ROI %
Revenue Assumptions	<i>Based on EIA metrics & shale production</i>	Adjusted with tech-driven savings
Sensitivity Case	<i>At \$5/Mcf, revenues increase ~4%</i>	Raises ROI beyond base case

INVESTOR NOT

- Calculations assume steady net cash inflow of \$170M/year from production + token yields.
- Payback achieved ~Year 3.5 when cumulative inflows equal capex.
- Sensitivity modeling (higher gas price at \$5/Mcf) pushes ROI ~4% higher, strengthening upside potential.

A full-page background image showing two oil pumpjacks in a desert landscape at sunset. The sky is a mix of orange, pink, and blue. The pumpjacks are made of dark, weathered metal. The one on the left is in the foreground, and the one on the right is slightly further back. Both have large, curved counterweights.

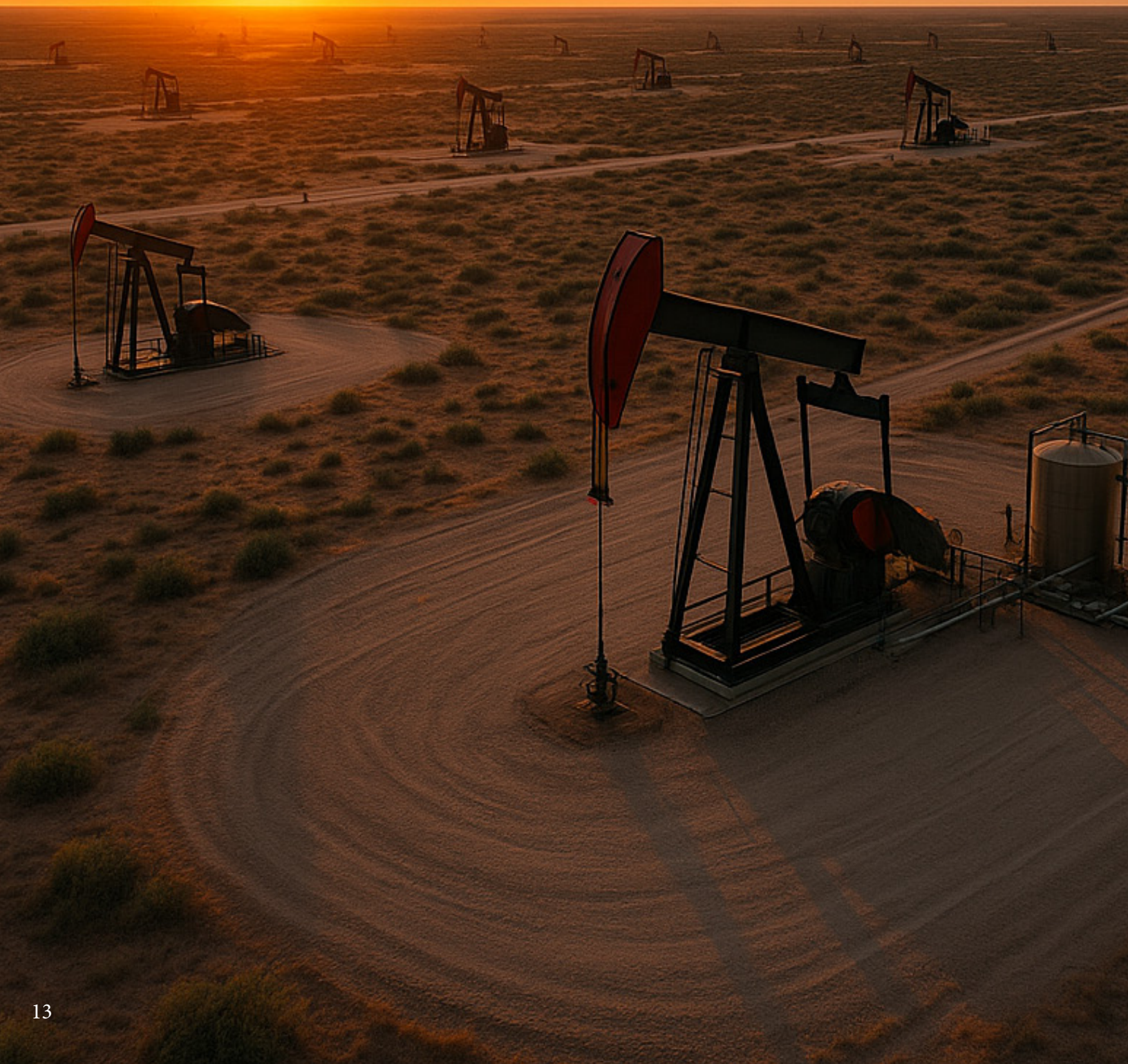
JOB CREATION AND ENVIRONMENTAL COMPACT

Job Creation: ~5,500 jobs
(2,750 direct in AI/blockchain
ops, 2,750 indirect).

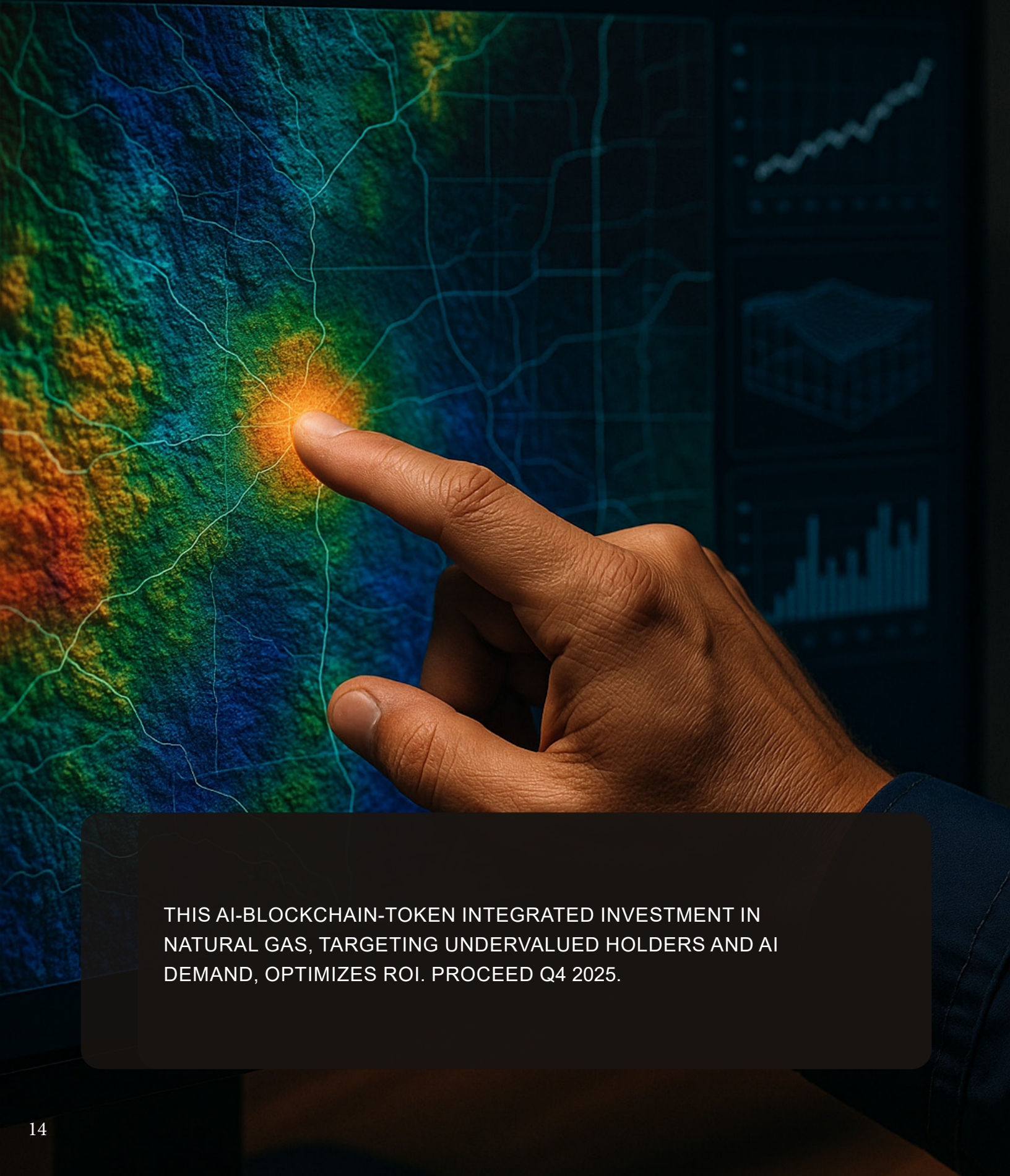
Environmental Compact:
60% methane cut by 2030;
CCUS for net-zero.

INTELLECTUAL PROPERTY CONSIDERATIONS

PATENTS ON AI ALGORITHMS,
BLOCKCHAIN PROTOCOLS, GUT TOKEN;
JVS PROTECT IN \$25B MARKET.



AI-DRIVEN ASSET ASSESSMENT



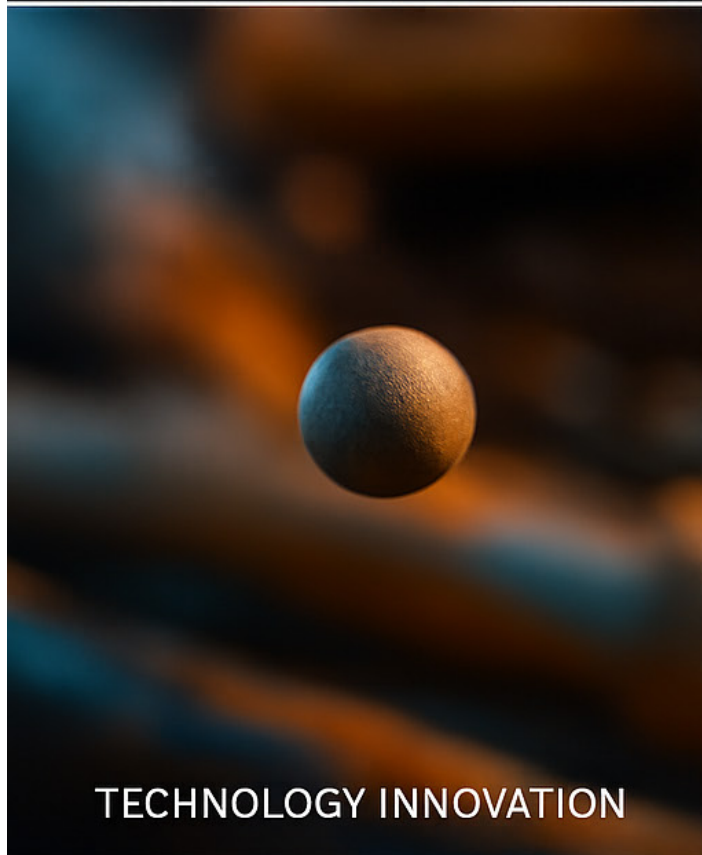
THIS AI-BLOCKCHAIN-TOKEN INTEGRATED INVESTMENT IN
NATURAL GAS, TARGETING UNDERVALUED HOLDERS AND AI
DEMAND, OPTIMIZES ROI. PROCEED Q4 2025.



RESOURCE DISCOVERY



OPERATING OIL RIGS



TECHNOLOGY INNOVATION



METHANE CAPTURE





www.geodynsolutions.com

©Geodynsolutions 2025 - All Rights Reserved